

EU QUIZ

MADE BY
MERCÉDESZ NÉMETH, MERSE BÁNFI, BALÁZS MAGYAR,
RÓBERT KATONA

1. HOW MANY PEOPLE LIVE IN THE EU?

- A. 390 Million
- B. 762 Million
- C. 508 Million
- D. 447 Million



2. WHICH EUROPEAN COUNTRY DECIDED NOT TO JOIN 2 TIMES BY REFERENDUM?

- A. Ireland
- B. Switzerland
- C. Turkey
- D. Norway



3. HOW MANY MEMBERS DOES THE EUROPEAN UNION HAVE?



- A. 19
- B. 28
- C. 48
- D. 32

4. HOW MANY TIME ZONES TOUCH THE TERRITORY OF THE EU?

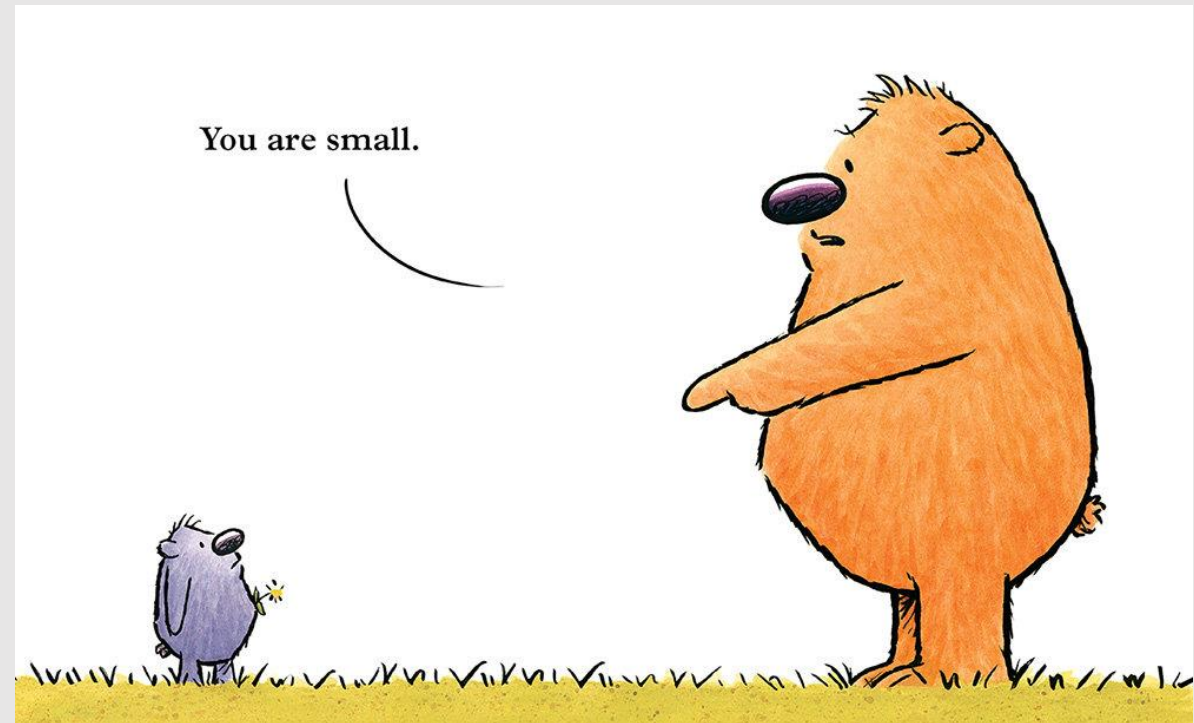
- A. 6
- B. 2
- C. 3
- D. 4

5. WHICH 6 COUNTRIES FOUNDED THE EU?

- A. Belgium, Netherlands, Luxemburg, France, West Germany, Italy
- B. Italy, Norway, Sweden, Belgium, Netherlands, Luxemburg
- C. Belgium, Netherlands, Luxemburg, France, Licheinstein, Italy

6. WHICH COUNTRY'S POPULATION IS THE SMALLEST IN THE EU?

- A. Andorra
- B. Luxemburg
- C. Licheinstein
- D. Malta



7. WHO IS THE PRESIDENT OF THE EUROPEAN COMMISSION?

- A. Angela Merkel
- B. José Manuel Barroso
- C. Jean-Claude Juncker
- D. Jean-Claude van Damme

8. IN WHICH YEAR DID MOST COUNTRIES JOIN THE EU?

- A. 1966
- B. 1995
- C. 2004
- D. 2012

9. HOW MANY EU MEMBERS USE THE EURO AS THEIR CURRENCY?

- A. 28
- B. 9
- C. 14
- D. 19



10. WHICH COUNTRY HAS THE BIGGEST TERRITORY IN THE EU?

- A. Russia
- B. Germany
- C. Spain
- D. France

11. WHICH ONE IS SLOVENIA'S FLAG?

A,



B,



C,



D,



12. WHERE CAN THIS MONUMENT BE FOUND?

- A. Munich
- B. Rotterdam
- C. Brussels
- D. Toulouse



13. WHERE IS THE MONT-BLANC?

- A. In the Alps
- B. In the Carpathians
- C. In the Himalayas
- D. In the Caucasus



14. WHICH TOWN IS NOT IN HUNGARY'S NEIGHBOUR COUNTRY?

- A. Brno
- B. Brasov
- C. Novi Sad
- D. Innsbruck

15. WHICH COUNTRY DOES NOT HAVE A BEACH?

- A. Austria
- B. Lithuania
- C. Albania
- D. Latvia



16. HOW MANY KILOMETERS LONG IS THE RUSSIAN-NORWEGIAN LAND BORDER?

- A. 46
- B. 521
- C. 196
- D. 0



17. WHICH COUNTRIES BELONG TO THE „V4” ?

- A. Germany, Poland, Hungary, Czech Republic
- B. Poland, Hungary, Slovakia, Czech Republic
- C. Czech Republic, Slovakia, Spain, Italy
- D. Italy, Ukraine, Poland, Romania

18. WHERE IS SCHENGEN (THE TOWN) ?

- A. France
- B. Schwitzerland
- C. Netherlands
- D. Luxemburg



19. WHICH COUNTRY WAS THE LAST TO JOIN THE EU?

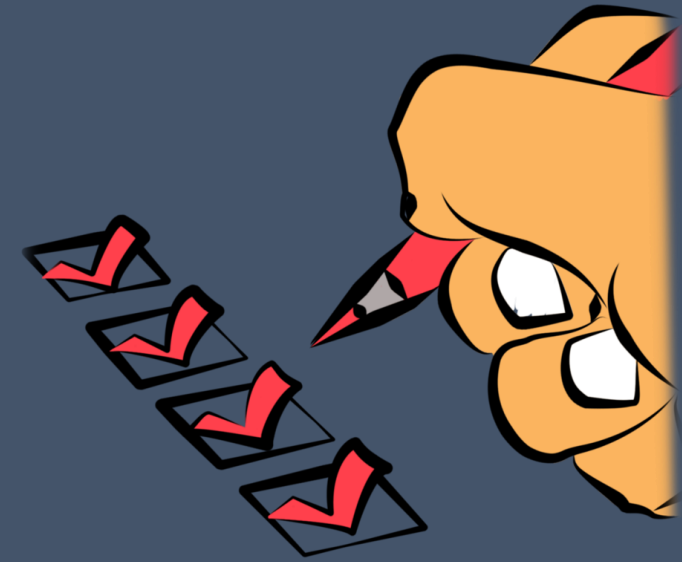
- A. Ireland
- B. Romania
- C. Croatia
- D. Bulgaria

20. WHERE IS THE HIGHEST PERCENTAGE OF RENEWABLE ENERGY USAGE IN THE EU?

- A. Germany
- B. Sweden
- C. Austria
- D. Netherlands



SOLUTIONS!



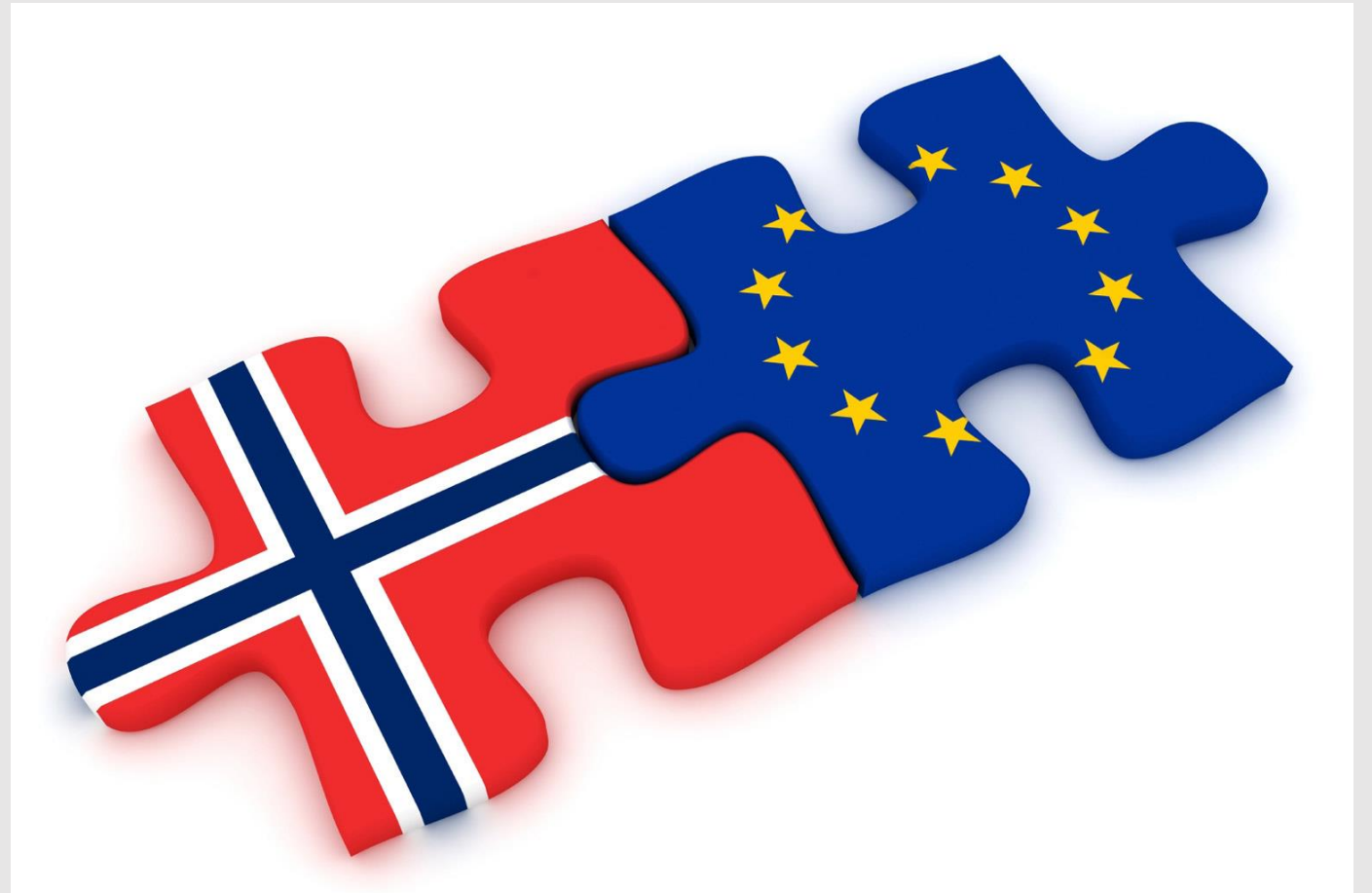
1. HOW MANY PEOPLE LIVE IN THE EU?

C. 508 Million

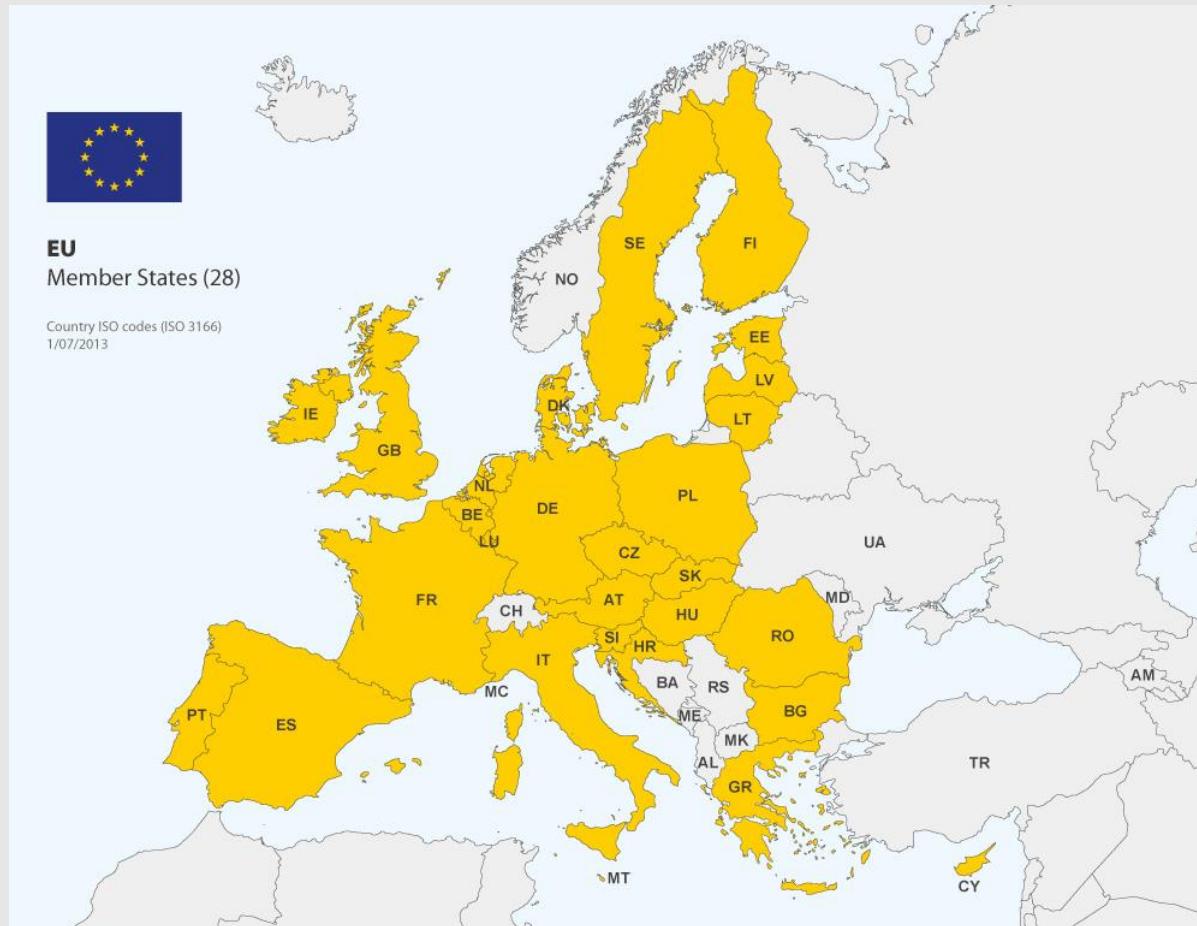


2. WHICH EUROPEAN COUNTRY DECIDED NOT TO JOIN 2 TIMES BY REFERENDUM?

D. Norway



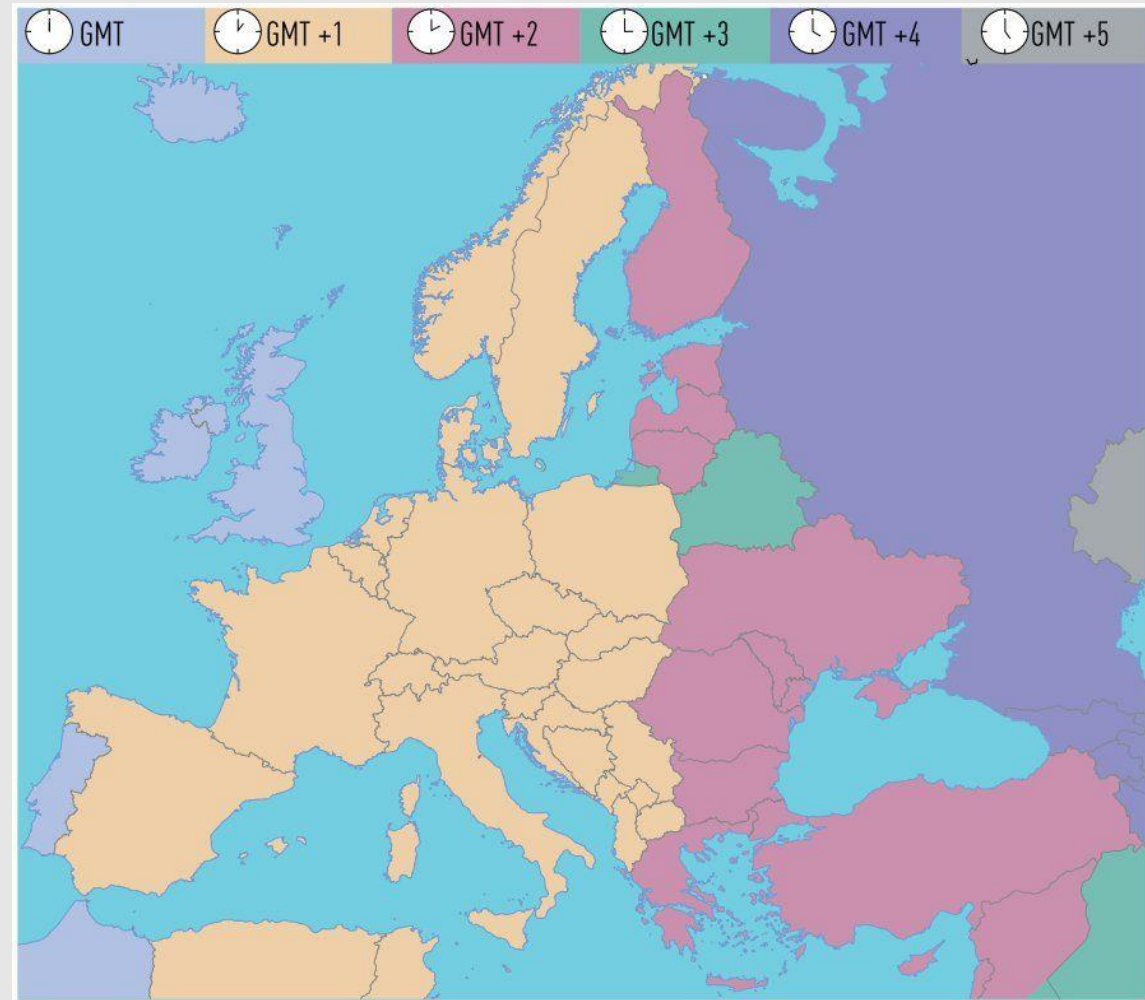
3. HOW MANY MEMBERS DOES THE EUROPEAN UNION HAVE?



B. 28

4. HOW MANY TIME ZONES TOUCH THE TERRITORY OF THE EU?

C. 3



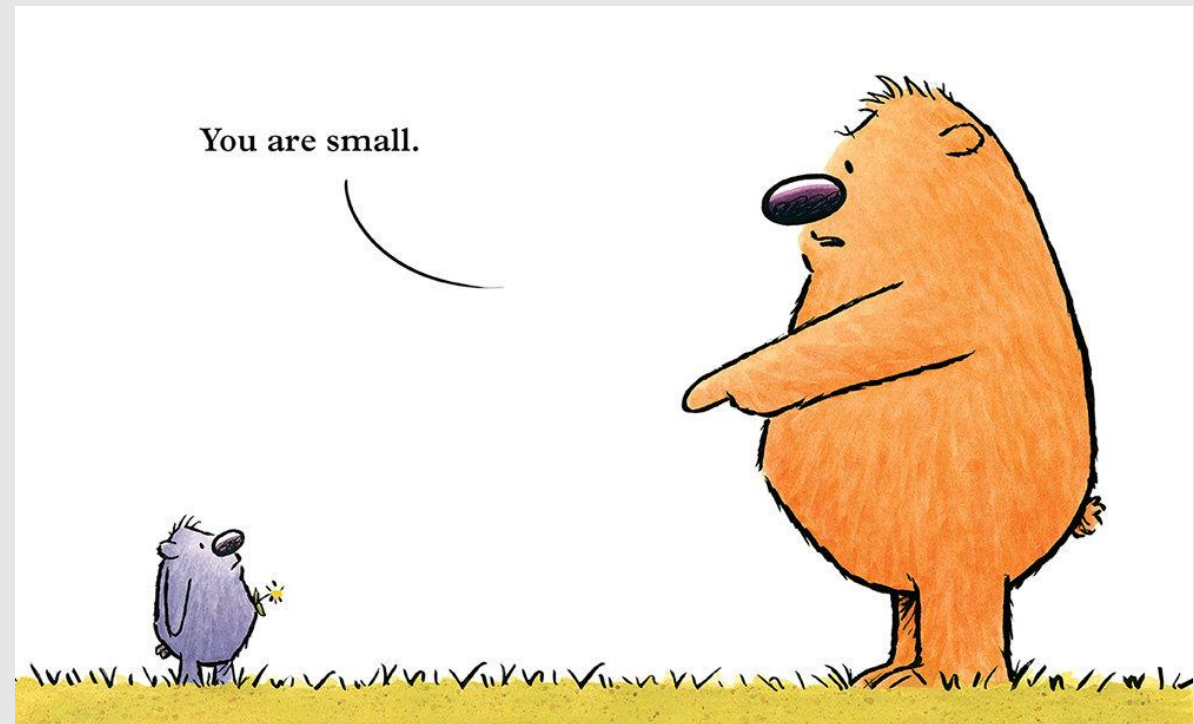
5. WHICH 6 COUNTRIES FOUNDED THE EU?

- A. Belgium, Netherlands, Luxemburg, France, West Germany, Italy



6. WHICH COUNTRY'S POPULATION IS THE SMALLEST IN THE EU?

D. Malta



7. WHO IS THE PRESIDENT OF THE EUROPEAN COMMISSION?

C. Jean-Claude Juncker

D. Jean-Claude van Damme



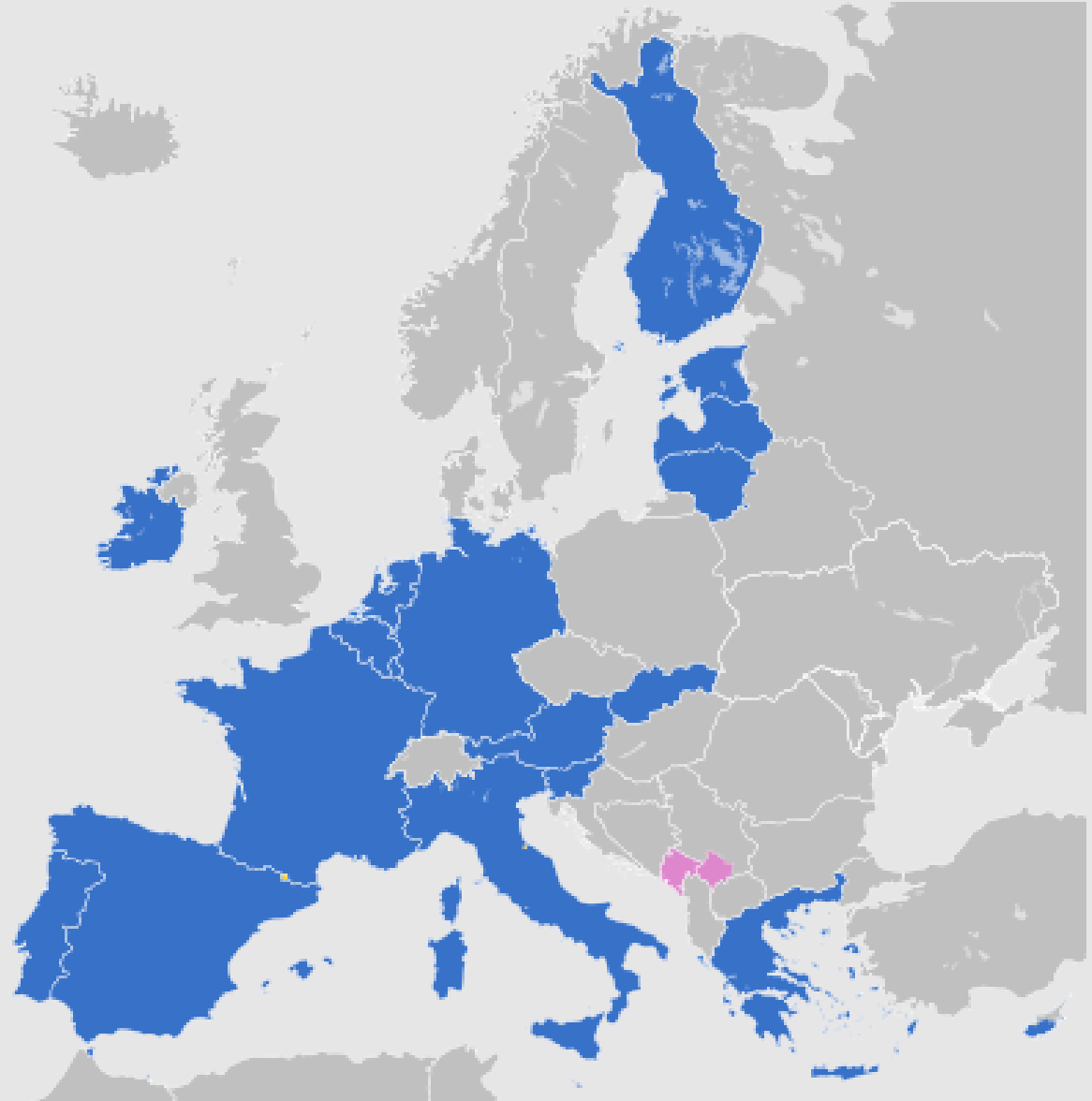
8. IN WHICH YEAR DID MOST COUNTRIES JOIN THE EU?

C. 2004



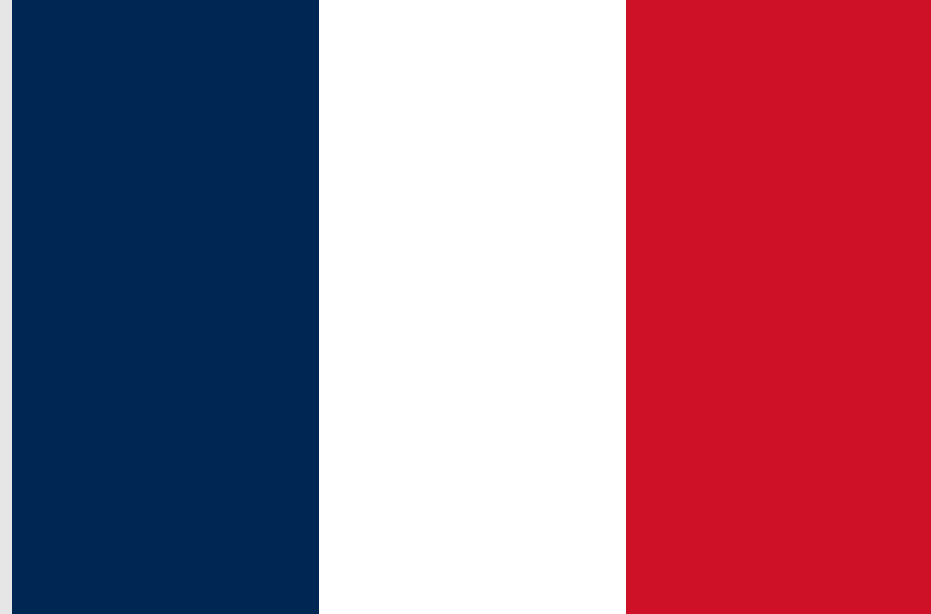
**9. HOW MANY
EU MEMBERS
USE THE EURO
AS THEIR
CURRENCY?**

D.19



10. WHICH COUNTRY HAS THE BIGGEST TERRITORY IN THE EU?

D. France



11. WHICH ONE IS SLOVENIA'S FLAG?

Russia



B,

Slovakia



C,



Serbia

D,

A,



12. WHERE CAN THIS MONUMENT BE FOUND?

C. Brussels



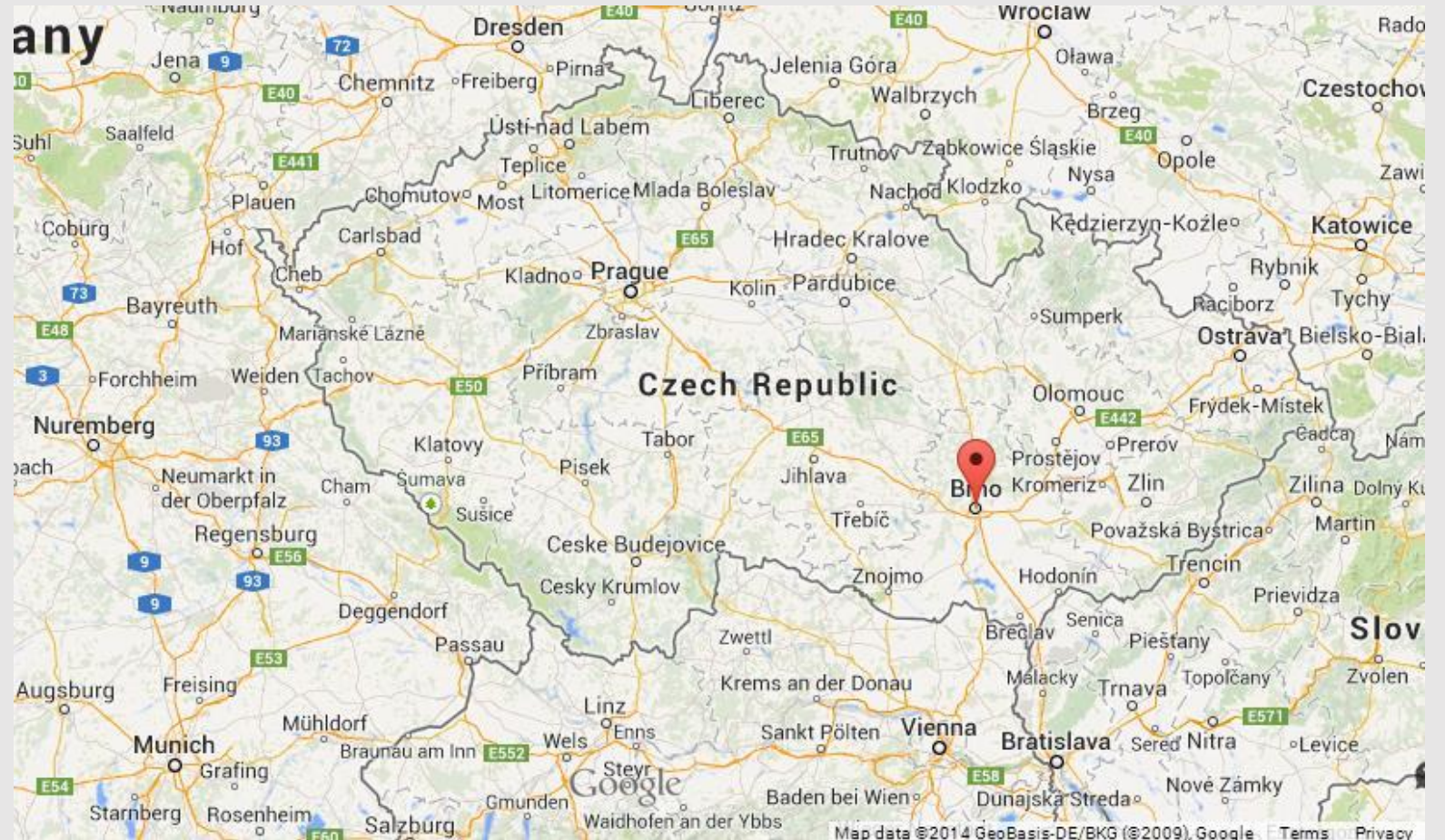
13. WHERE IS THE MONT-BLANC?

A. In the Alps



14. WHICH TOWN IS NOT IN HUNGARY'S NEIGHBOUR COUNTRY?

A. Brno



15. WHICH COUNTRY DOES NOT HAVE A BEACH?

A. Austria



16. HOW MANY KILOMETERS LONG IS THE RUSSIAN-NORWEGIAN LAND BORDER?

C. 196



17. WHICH COUNTRIES BELONG TO THE „V4” ?

B. Poland,
Hungary,
Slovakia, Czech
Republic



18. WHERE IS SCHENGEN (THE TOWN) ?

D. Luxemburg



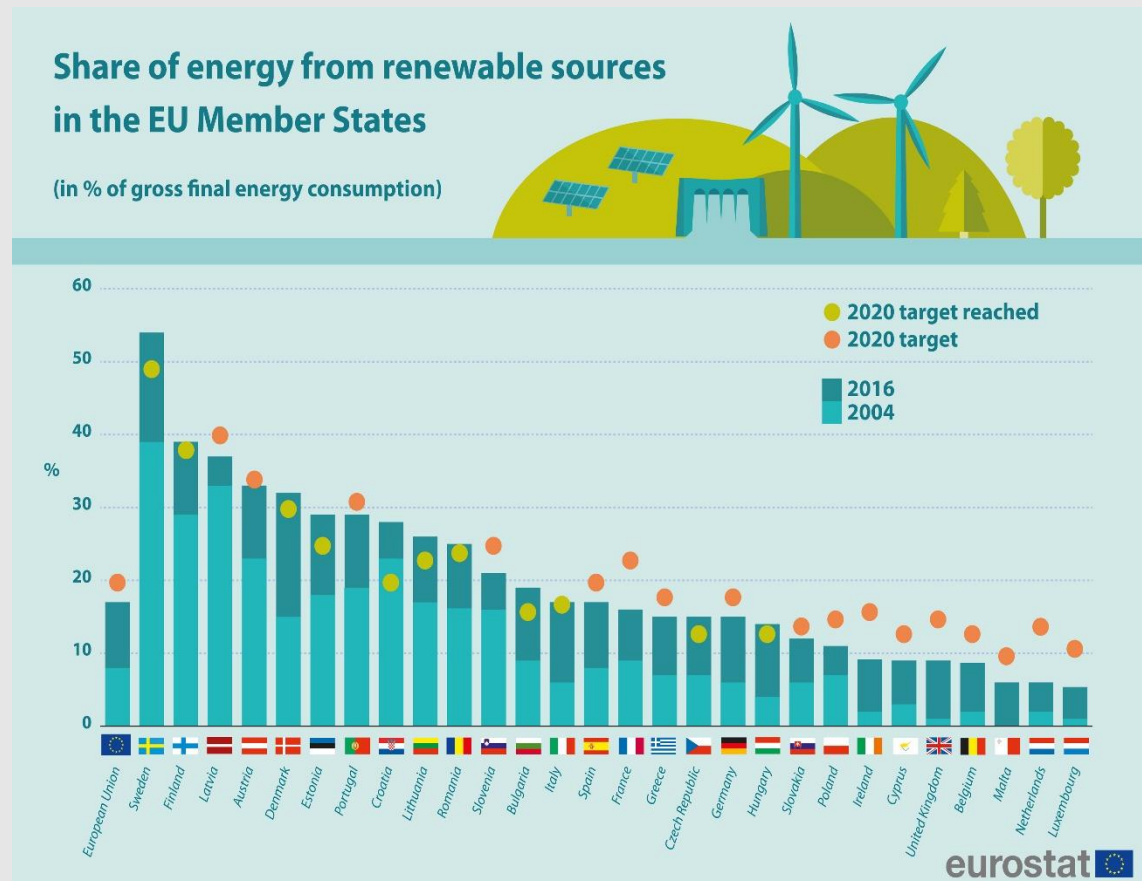
19. WHICH COUNTRY WAS THE LAST TO JOIN THE EU?

A. Croatia



20. WHERE IS THE HIGHEST PERCENTAGE OF RENEWABLE ENERGY USAGE IN THE EU?

B. Sweden



**THANK YOU FOR
YOUR ATTENTION!**

